



The Great Progression Plan

A Blueprint for 2050 and Beyond



By Matthew J. Tattersall

EratosWorld.com

What is The Great Progression Plan?



The Great Progression Plan is an economic stimulus package designed to create greener and more equitable communities by combining agricultural and waste management practices.

Mission & Objectives

Along with the help of The Green and Blue Core, our mission is to help build prosperous, resilient, healthy and waste free communities by creating and expanding The Core Network.



Objectives:

1. Create and expand The Core Network.
2. Develop and uphold The Core Standard.
3. Convert participating municipalities into Negative Waste Communities.
4. Resolve and / or ensure that The Big Five has been met by 2050.

The Green and Blue Core

The Green and Blue Core is a non profit organization dedicated to creating and expanding The Core Network.

Our job is to form strategic partnerships between network members and their community through a variety of services such as consulting, marketing, fundraising and controlled climate systems installation and maintenance.



The Core Network

The Core Network is a community of farmers (AKA “growers”), waste managers (AKA “valuators”), entrepreneurs, hobbyists, activists, leaders and regular citizens like you or I working together in order to ensure that operations run efficiently and that The Core Standard is upheld.

Members of The Core Network will have contracts with schools, local businesses, restaurants, grocery stores and offer individual subscription services which will connect consumers directly with their growers and valuers.



Who Can Join The Core Network?



Everyone can join! We want hobbyists, farmers, entrepreneurs, activists and even politicians to become members.

All you have to do is go to our website and check out some of the projects we offer. Then, send us a request and we will be happy to provide you with more information.

The Core Standard

The Core Standard is a currency “based on waste”. We believe that people should be earning for their participation in our programs and since our farms can do much more with trash than they can with gold, this only makes sense.

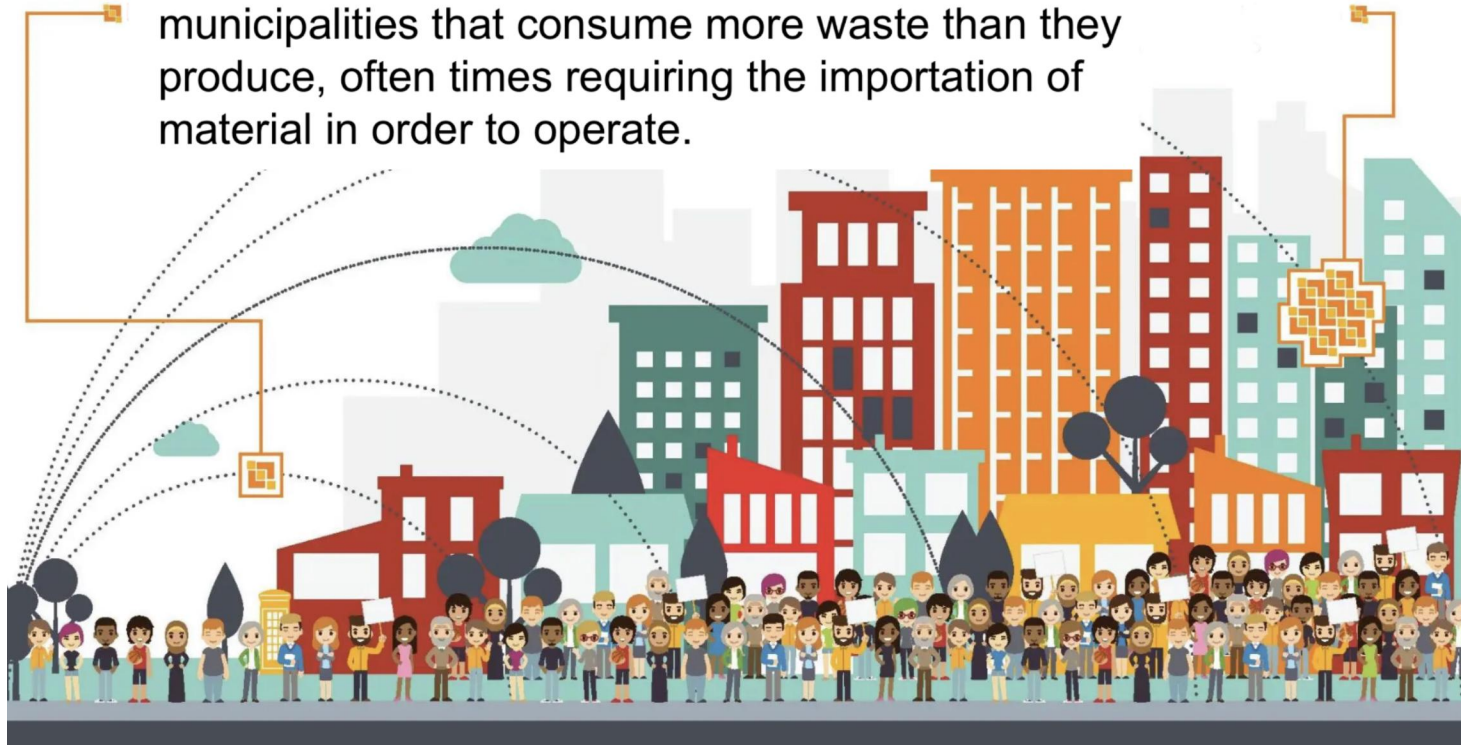
The Core Standard isn’t just “based on waste”, it is backed by products and services provided by The Core Network (food, supplies, energy, etc).

We are confident that by 2030, what people perceive as being garbage today, may very well be viewed as value instead.



Negative Waste Communities (NWCs) -

municipalities that consume more waste than they produce, often times requiring the importation of material in order to operate.



One of the ways in which The Green and Blue Core measures its success is by the amount of municipal waste which gets eliminated. Utilizations of said material will vary between recycling, waste to energy and landfills.

The Big Five

There are five major factors that The Great Progression Plan will provide, reduce and/or prevent when in full effect:



1. Financial Security
2. Environmental Pollution
3. Food Security
4. Freshwater Security
5. Emergency Supply Stockpiling

NOTE: Consider 4 & 5 as being “bonuses”. The primary objectives of this plan focuses on numbers 1 - 3.

Financial Security

Perhaps the greatest impact that The Great Progression Plan will have on communities is through the creation of a new currency. This will provide households with a number of opportunities to earn supplemental income through our programs.

Besides the currency system, localizing agriculture alone will greatly reduce the cost of living.

Additionally, tens of thousands of jobs at all pay scales will be created as one of The Green and Blue Core's key services is to help aid and assist entrepreneurs in developing their businesses.



Food Security

The world needs to increase current food production by between fifty and seventy percent in order to feed the growing population between now and 2050. The food being produced today is losing its nutritional value due to a number of factors such as travel distance and the amount of time in which it takes to get from farms to the consumer. Additionally, traditional farming is too risky and labor intensive which discourages people from entering the industry.

Our plan is to “bring back the local farmer” by providing a variety of services to both existing and aspiring farmers; most notably through the installation, training and maintenance of controlled environment systems.



Environmental Pollution

In respect to environmental pollution, we're dealing primarily with municipal waste. As stated earlier, utilizations of the material will be as followed:

1. Recycling
2. Waste to Energy
3. Composting / Landfills

Collection methods provided by The Core

Network will consist of:

- A. Subscription Services
- B. Collection Points
- C. Events / Campaigns



Freshwater Security



The world is already in the midst of a freshwater crisis and it's only getting worse.

Agriculture alone is responsible for wasting countless amounts of water each year so our farming systems are designed to be precise when it comes to giving each crop the proper amount of water necessary for an optimal harvest.

Additionally, we have a strong emphasis on desalination technology as our aim is to utilize only desalinated water by 2030.

Emergency Supply Stockpiling

If there's ever another event like COVID, we guarantee that there will be plenty of toilet paper stockpiled for everyone.

Besides that, The Green and Blue Core will have a diverse inventory of emergency supplies such as masks, gloves, blankets, etc. All of which will be made from recycled material.



THINK: Instead of gold vaults, we have supply vaults...

Final Note:

No plan goes accordingly, we know this. There are a lot of moving pieces here so it is impossible to foresee exactly how everything will play out but we are confident that each objective will be met over time.

Things move fast in today's day and age so it is believed that as more people become aware of this plan's potential, time frame estimates will be reduced. However, we cannot do this alone obviously.

The Great Progression Plan needs all the support it can get so please, help spread the word and stay in the loop by subscribing to our website and following us on social media for updates.

THANKS FOR READING!



Please stay in the loop for further updates by checking out our website at EratosWorld.com